

Lower Penitencia Creek Improvements Project

Community Update & Draft Environmental Impact Report Meeting

May 22, 2017



Agenda

- 1. Meeting Purpose**
2. Santa Clara Valley Water District Mission
3. Project Background and Overview
4. Project Schedule
5. Draft Environmental Impact Report (DEIR) Summary
6. Next Steps/Public Comments on DEIR

Meeting Guidelines

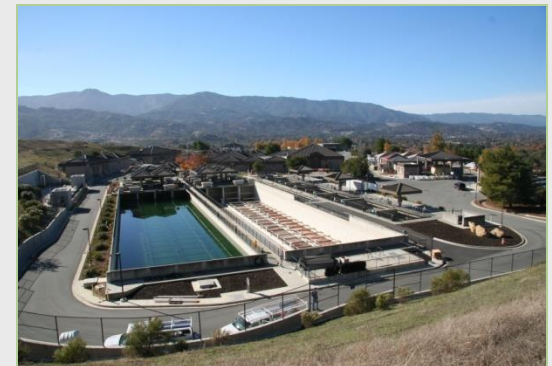
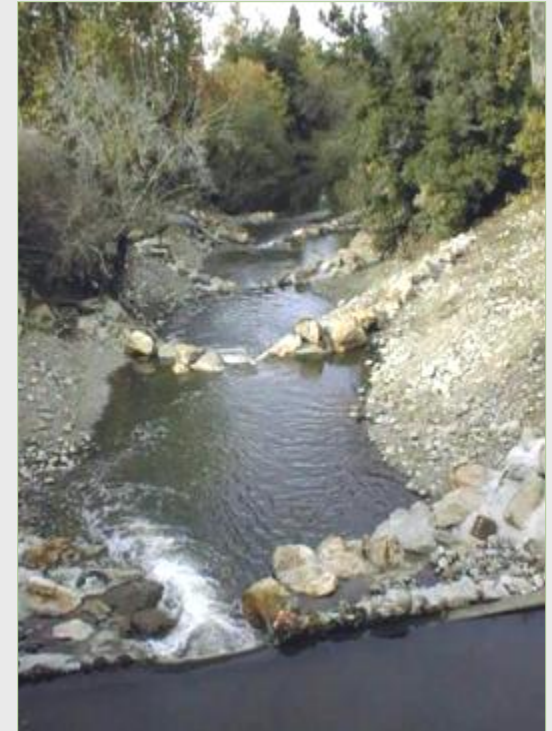
- Please silence cell phones
- Please hold all questions to the end of the presentation
- Microphone is available if you wish to speak
- Comment cards are available at the front table

Agenda

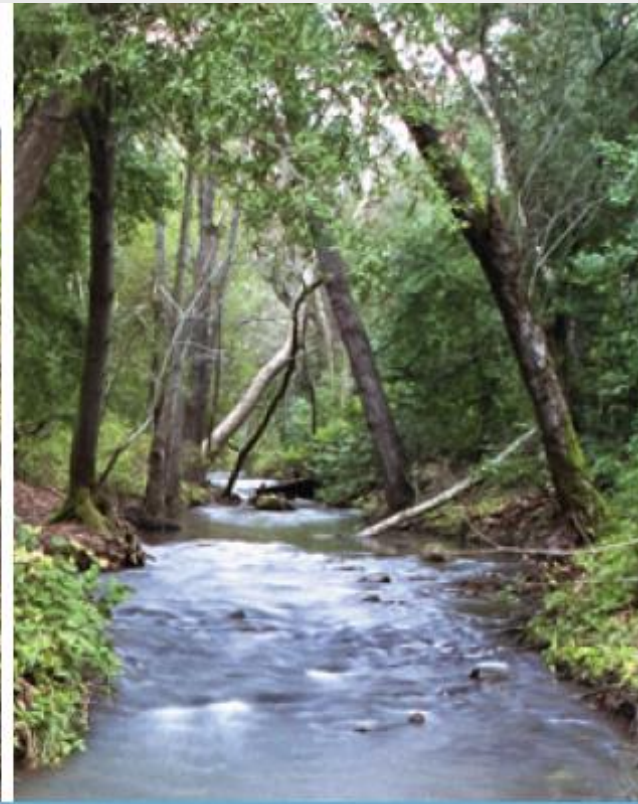
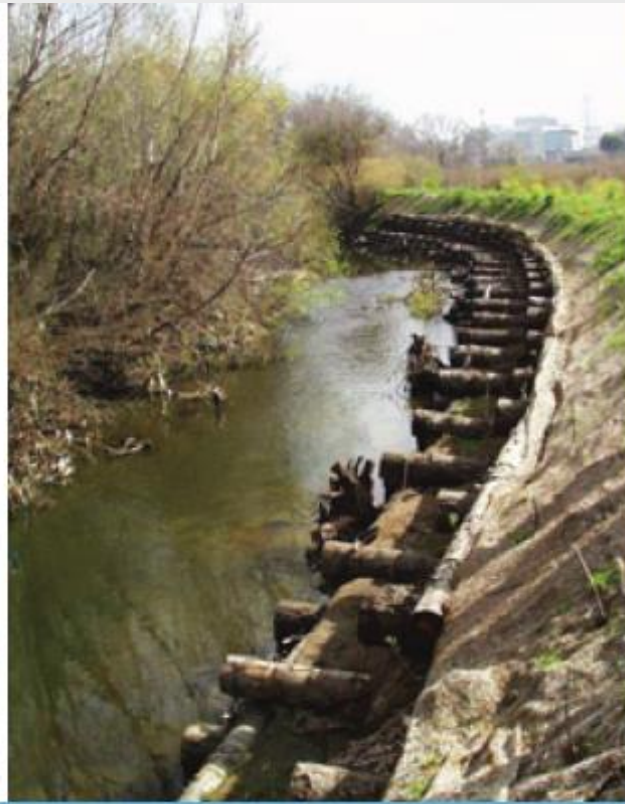
1. Meeting Purpose
- 2. Santa Clara Valley Water District Mission**
3. Project Background and Overview
4. Project Schedule
5. Draft Environmental Impact Report (DEIR) Summary
6. Next Steps/Public Comments on DEIR

SCVWD Mission

The mission of the Santa Clara Valley Water District is to provide Silicon Valley safe, clean water for a healthy life, environment, and economy



SCVWD Core Services



Clean, Reliable Water

Flood Protection

**Healthy Creeks &
Ecosystems**

Santa Clara Valley
Water District



SCVWD Serves

2,000,000 people

15 cities

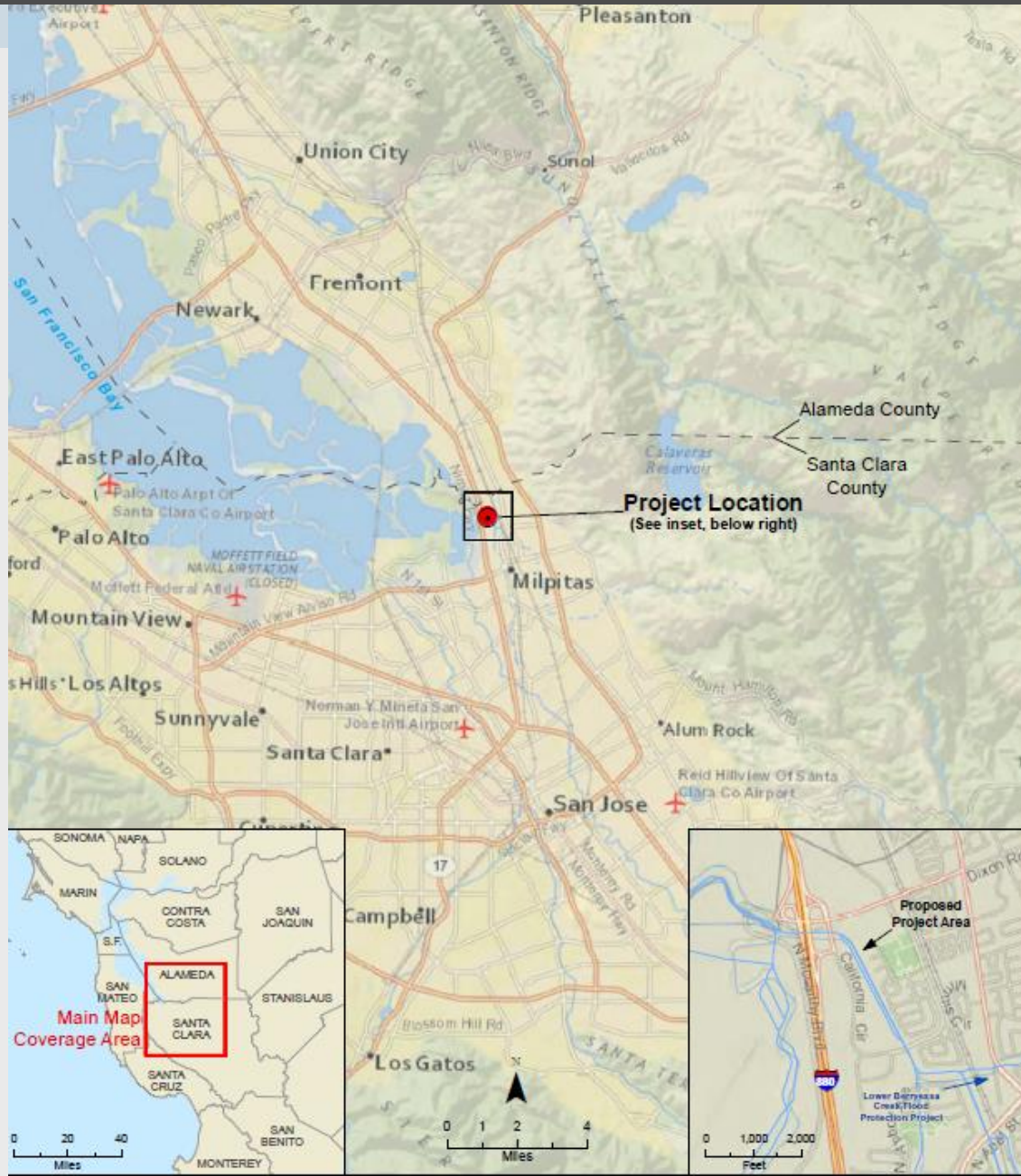
12 water retailers

4,700 direct well owners

Agenda

1. Meeting Purpose
2. Santa Clara Valley Water District Mission
- 3. Project Background and Design Overview**
4. Project Schedule
5. Draft Environmental Impact Report (DEIR) Summary
6. Next Steps/Public Comments on DEIR

Vicinity Map



Project Map



Aerial Photographs

1939



INQUIRY #: 4067648.5
YEAR: 1939
= 500'
N
EDR

1956



INQUIRY #: 4067648.5
YEAR: 1956
= 500'
N
EDR

Aerial Photographs

1981



81 10 23

Aerial Photographs

1982



INQUIRY #: 4067648.5

YEAR: 1982



| = 500'

1993



INQUIRY #: 4067648.5

YEAR: 1993



| = 500'

History of Flooding (January 1983)

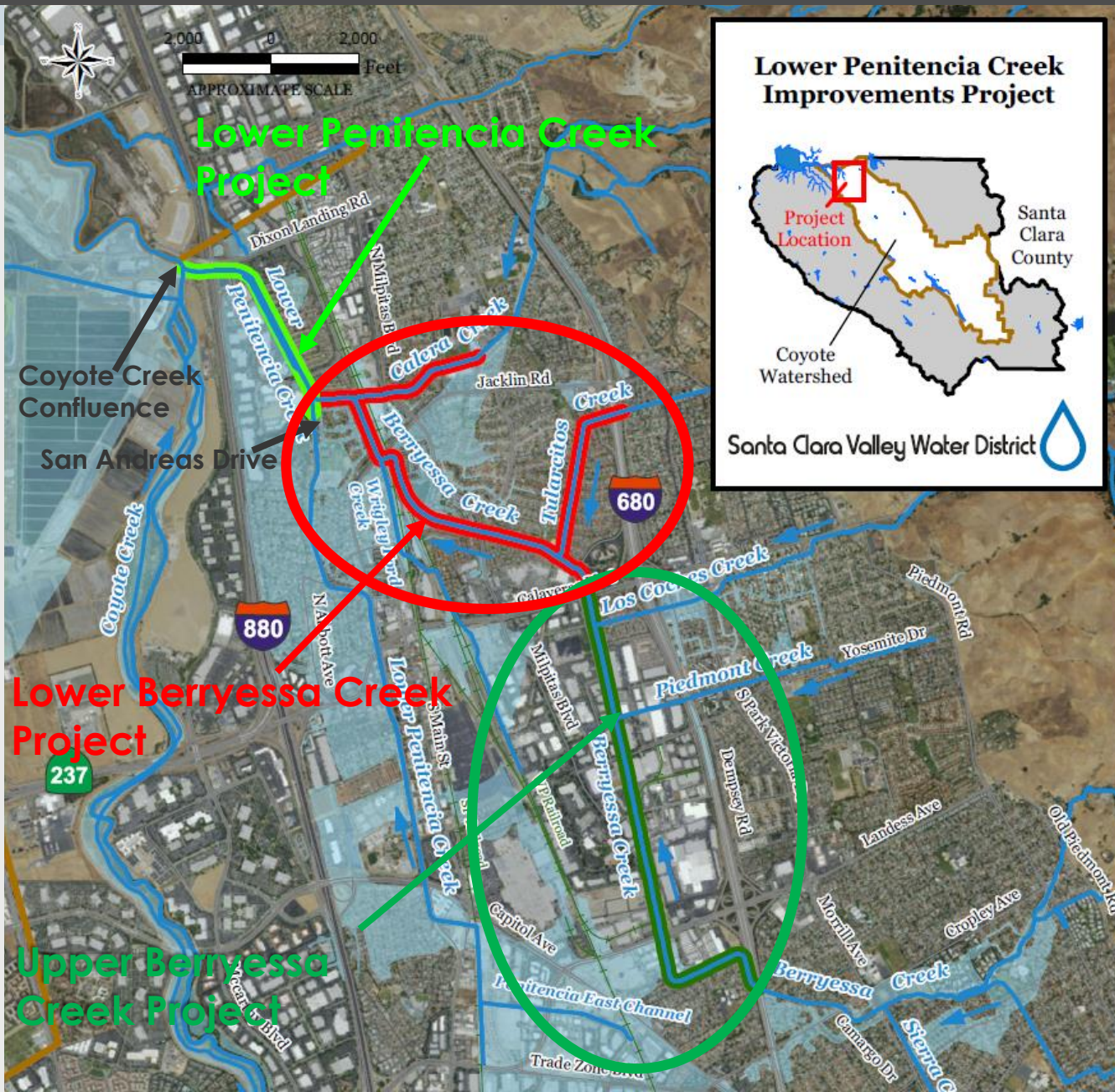


83 1 25

Levee Improvements



Upstream Projects



Why do this project ?

- Completion of the Lower and Upper Berryessa Creek Projects will increase the one percent flow in the Berryessa – Lower Penitencia Creek system.
- Additional improvements are required along Lower Penitencia Creek to increase its capacity to convey the increased one-percent flow.

Project Objectives

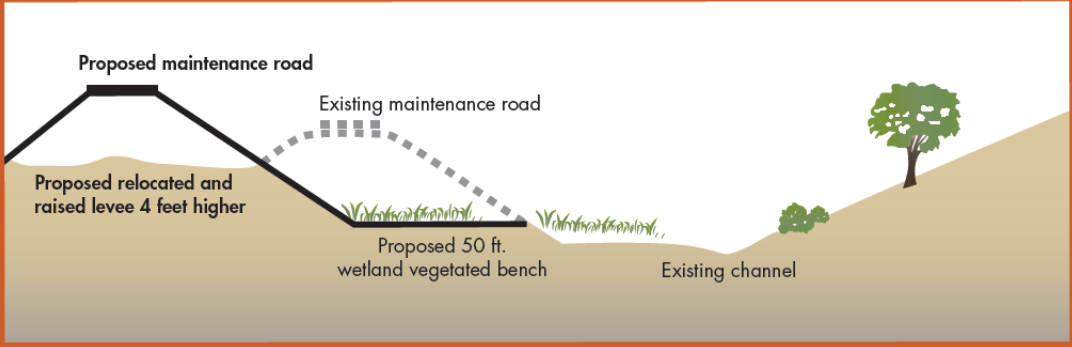
- Convey the Lower Berryessa Creek one-percent design flow
- Meet required water surface elevations at Coyote Creek and Berryessa Creek confluences
- Minimize the need for seasonal removal of sediment and non-woody vegetation
- Maintain existing Federal Emergency Management Agency (FEMA) accreditation along east levee located between California Circle and Berryessa Creek
- Ensure improvements meet FEMA certification requirements

Project Reaches



Proposed Improvements (Reach 1)

Reach 1 — Coyote Creek to Interstate 880



Proposed Improvements (Reach 2)

Reach 2 — Interstate 880 to California Circle



Dixon Landing Blvd

Interstate 880

Lower Penitencia Creek

Proposed Floodwall

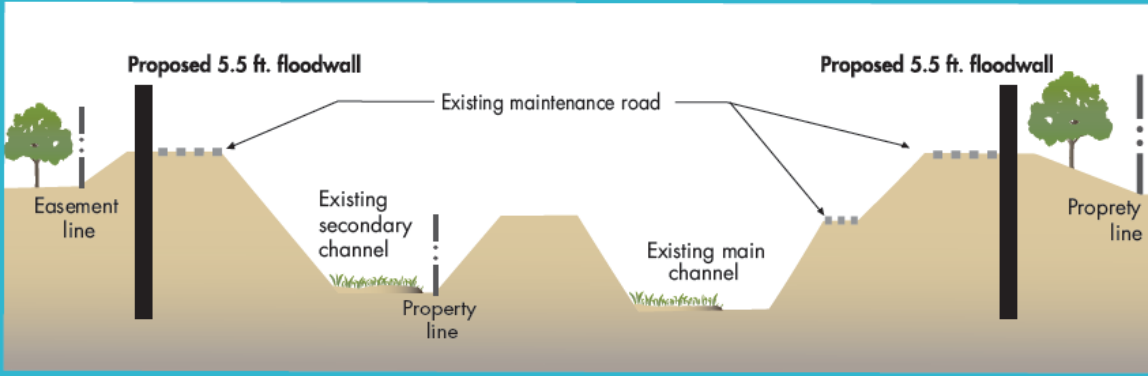
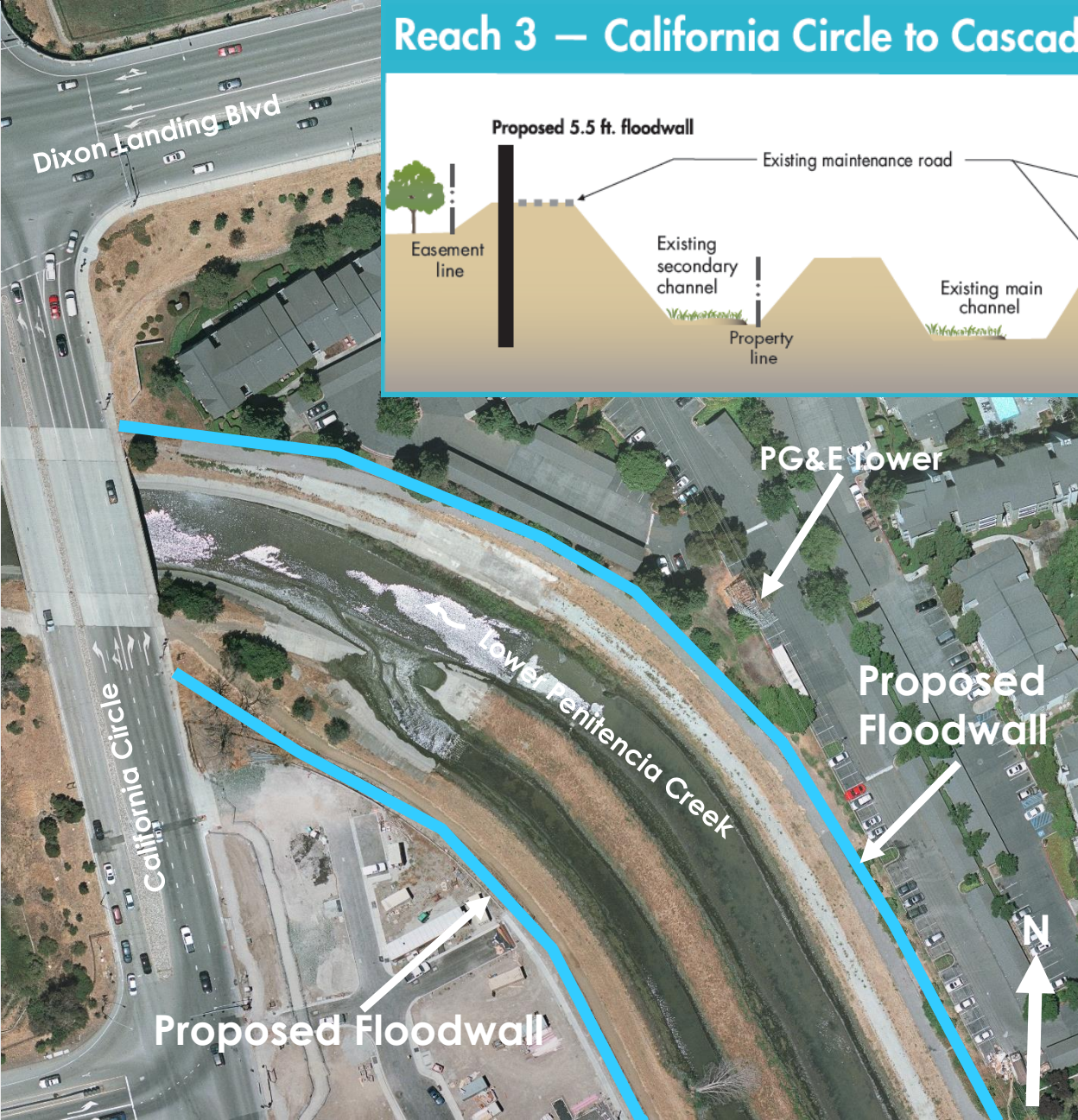
California Circle Pump Station

California Circle



Proposed Improvements (Reach 3)

Reach 3 — California Circle to Cascadita Terrace



Proposed Floodwall

PG&E Tower

Proposed Floodwall

Lower Penitencia Creek

Dixon Landing Blvd

California Circle

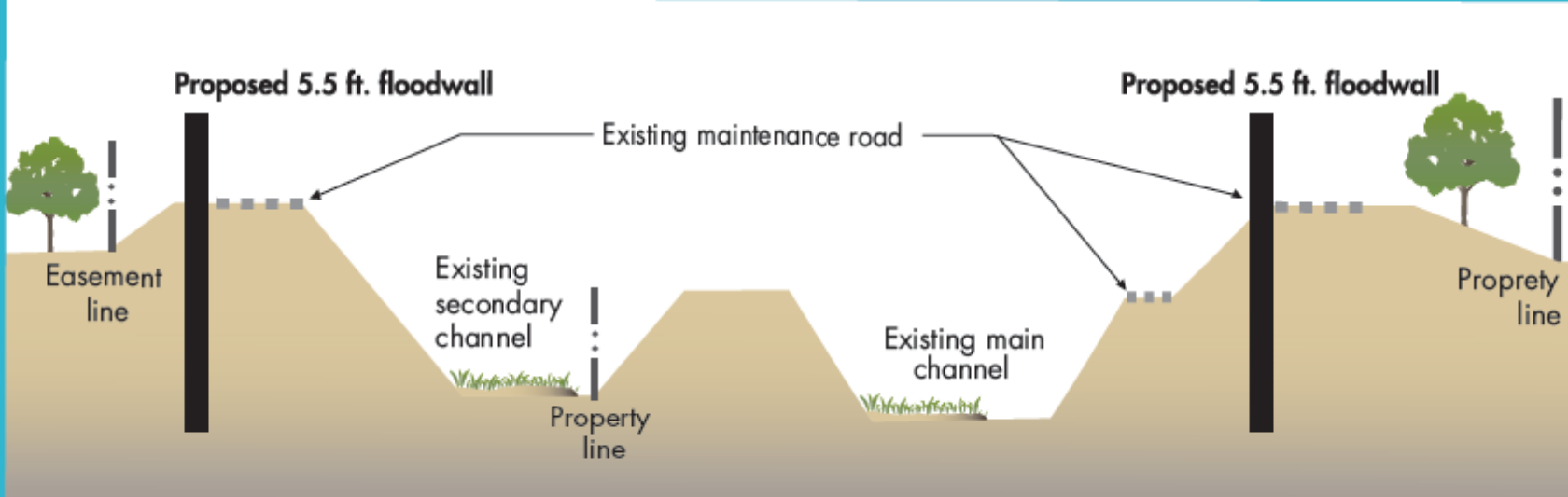
Santa Clara Valley Water District



Proposed Improvements (Reach 3)



Reach 3 — Cascadita Terrace to Milmont Drive



Proposed Improvements (Reach 4)

Reach 4 — Milmont Drive to San Andreas Drive



Milmont Drive

Summerwind Drive

Levee Raise

Proposed 6 ft. floodwall

Proposed maintenance road

Easement line

Property line

Existing maintenance road

Proposed levee raised 6 ft. higher

Property line

Existing concrete lining

Lower Penitencia Creek

Proposed Headwalls

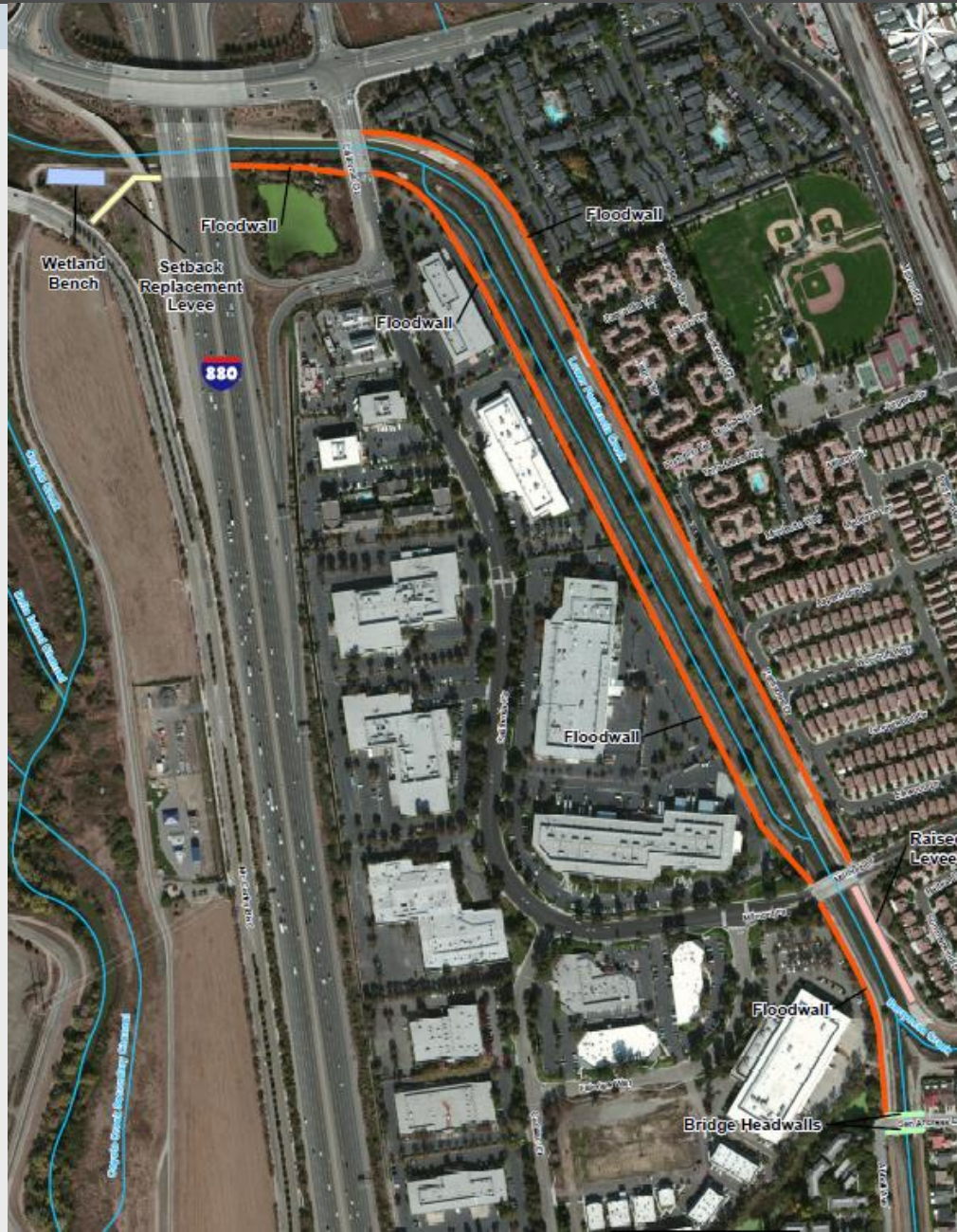
San Andreas Drive

Proposed Floodwall

Abbott Pump Station

N Abbott Avenue

Proposed Channel Improvements



Sheet Pile Floodwall



Sheet Pile Floodwall

Long Beach, CA



Sheet Pile Floodwall

Long Beach, CA



Sheet Pile Floodwall

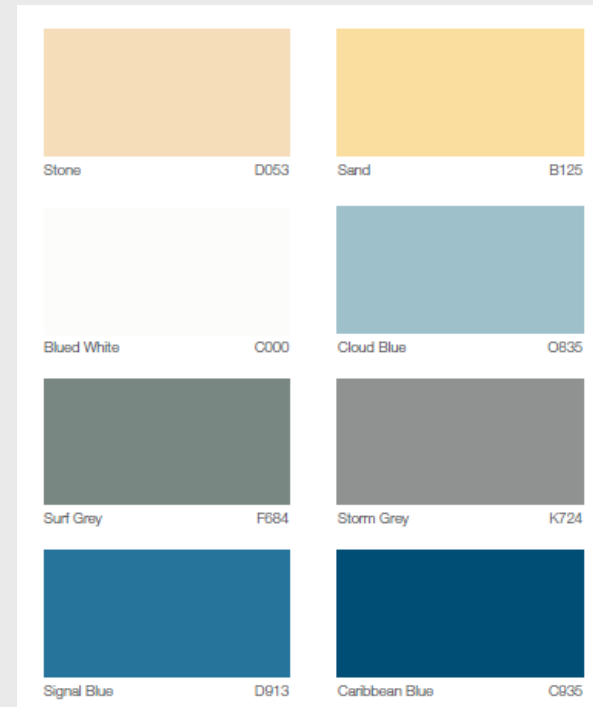
Downtown Guadalupe
San Jose, CA



© 2016 Google
© 2016 Google

Google Earth

Sheet Pile Floodwall (Color Coatings)



Construction Noise

Construction Vibration



Concrete Wall Option (used for Upstream Projects)



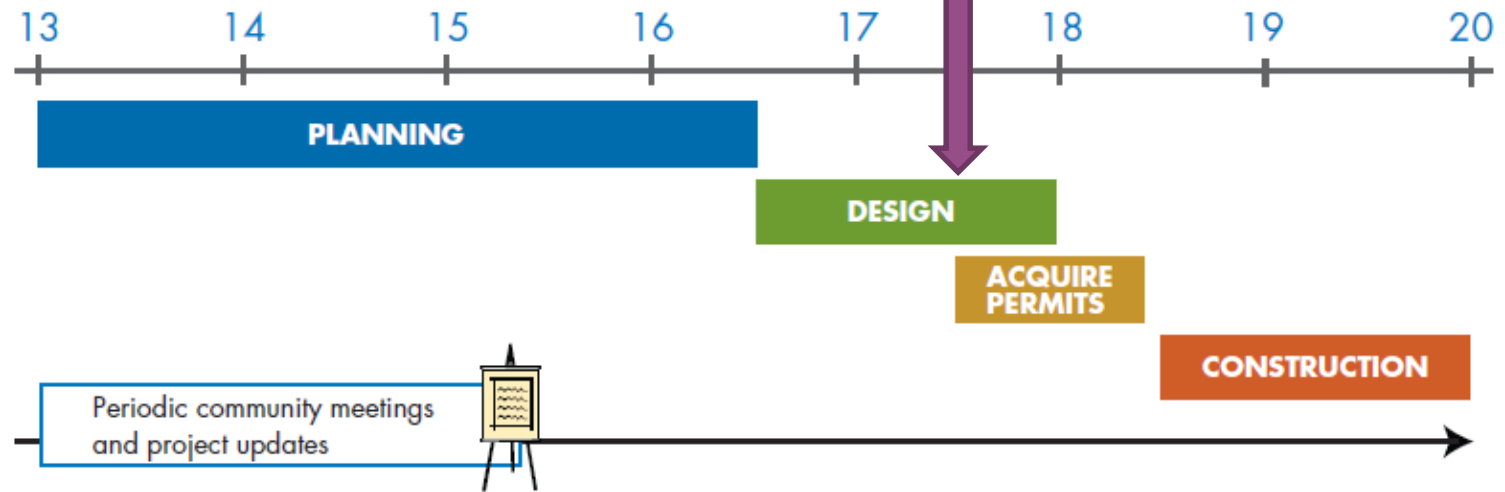
Agenda

1. Meeting Purpose
2. Santa Clara Valley Water District Mission
3. Project Background and Overview
- 4. Project Schedule**
5. Draft Environmental Impact Report (DEIR) Summary
6. Next Steps/Public Comments on DEIR

Project Schedule

Project schedule

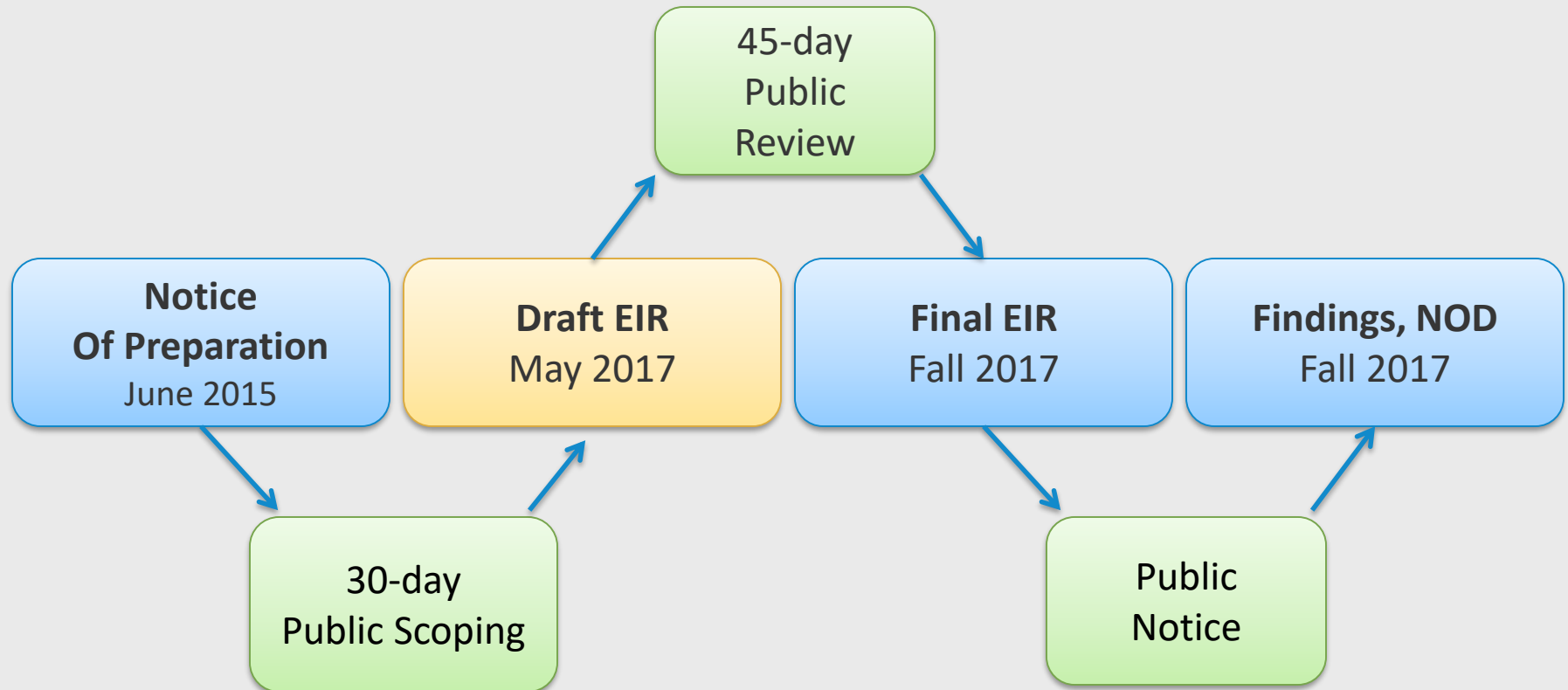
calendar years



Agenda

1. Meeting Purpose
2. Santa Clara Valley Water District Mission
3. Project Background and Overview
4. Project Schedule
- 5. Draft Environmental Impact Report (DEIR) Summary**
6. Next Steps/Public Comments on DEIR

CEQA Process and Schedule



Environmental Resources Evaluated

- Aesthetics
- Air quality
- Biological resources
- Cultural resources
- Geology, soils and seismicity
- Greenhouse gas emissions
- Hazards and hazardous materials
- Hydrology and Water Quality
- Land use and planning
- Noise and vibrations
- Recreation
- Transportation/traffic
- Utilities/service systems
- Cumulative impacts

Impacts Mitigated to Less than Significant

Temporary Construction-related:

- Air Quality
- Biological resources
- Hazardous materials
- Traffic

Construction and Operation:

- Geology, soils and seismicity

Cumulative Impacts:

- Air quality
- Biological resources
- Greenhouse gas emissions
- Traffic

Significant and Unavoidable Impacts

- ▶ Temporary noise impacts during construction period (June 15 to October 15)
- ▶ Temporary groundborne vibration impacts during construction phase (June 15 to October 15)
- ▶ Cumulative noise and vibration impacts during construction period (June 15 to October 15)

Alternatives to Proposed Project

- ▶ No Project Alternative
- ▶ Alternative 1: Reach 1 Raised Levee, Floodwalls, and Ongoing Sediment Removal
- ▶ Alternative 2: Reach 1 Raised Setback Levee, Reaches 1 and 3 Wetland Benches, and Floodwalls
- ▶ Alternative 3: Reach 1 Raised Levee, Reach 3 Concrete Lining, and Floodwalls

Contents of Final EIR

- ▶ Copies of written comments received on the Draft EIR
- ▶ District responses to written comments on Draft EIR
- ▶ Changes to the Draft EIR made in response to comments

Agenda

1. Meeting Purpose
2. Santa Clara Valley Water District Mission
3. Project Background and Overview
4. Project Schedule
5. Draft Environmental Impact Report (DEIR) Summary
- 6. Next Steps/Public Comments on DEIR**

Effective Commenting

- Public input is valued and important
- Keep comments substantive and focused on the CEQA analysis
- Comments may be provided in writing during the public review period via mail, email or website.

How to Comment After Today

- **Comments due:**

5:00 pm on July 3, 2017

- **Submit comments online:** www.valleywater.org/PublicReviewDocuments.aspx

- **Send written comments to:**

Michael Coleman

Santa Clara Valley Water District

5750 Almaden Expressway

San Jose, CA 95118

Phone: (408) 630-3096

E-mail: mcoleman@valleywater.org

Subject Line: Lower Penitencia Creek CEQA Comments

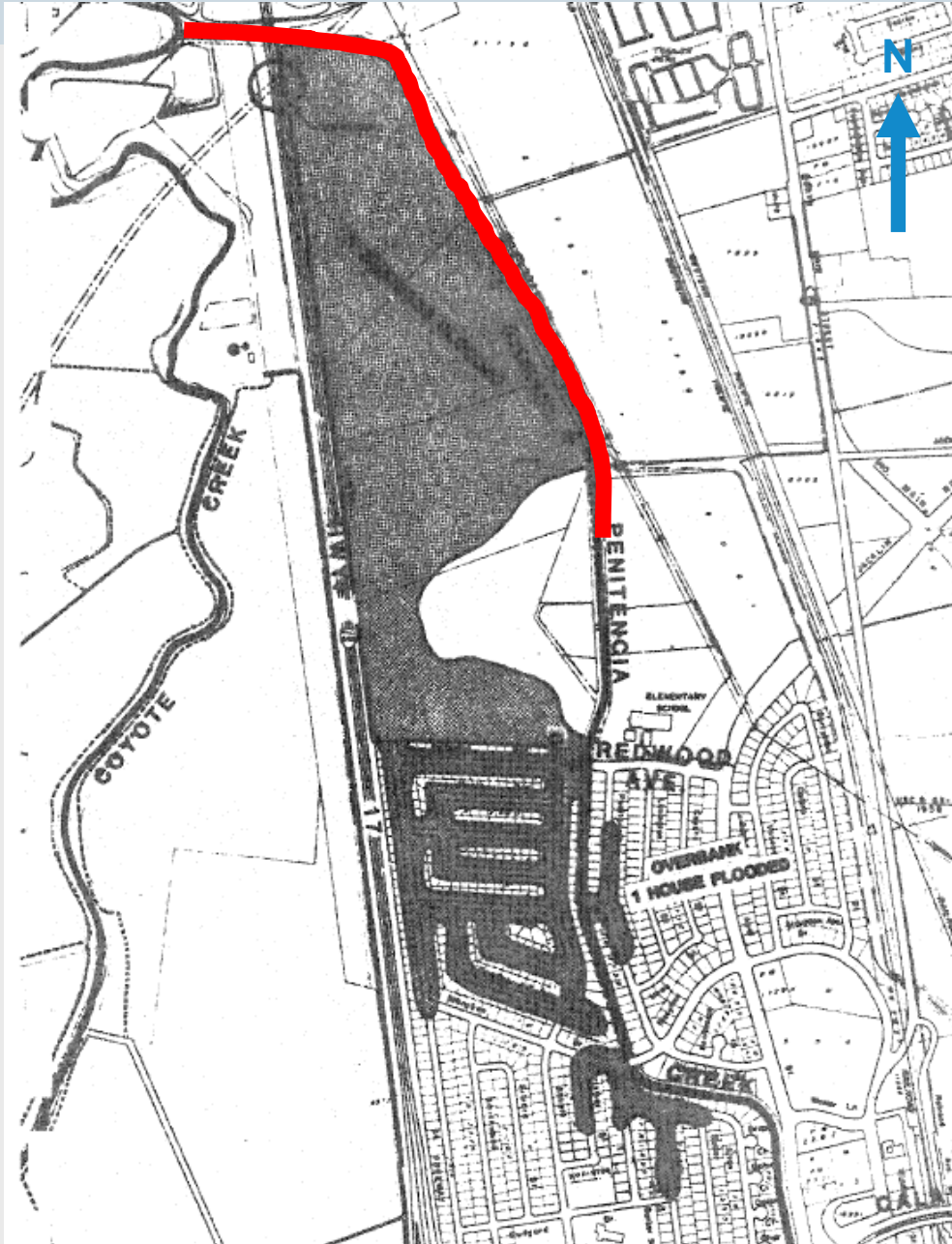
Include a name, address, contact number, and email address for future correspondence related to this CEQA process

Questions?

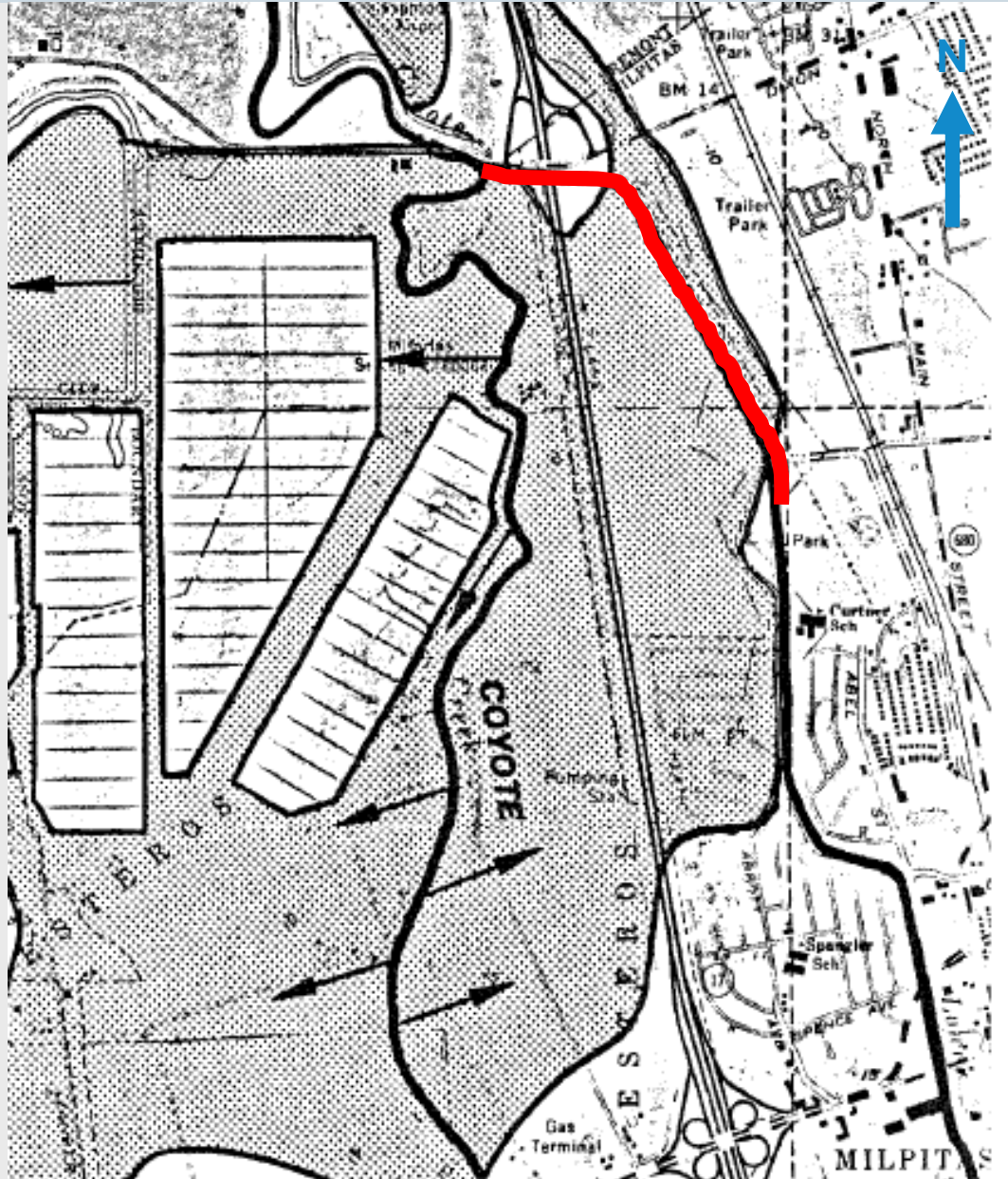
Santa Clara Valley
Water District



History of Flooding (March 1982)



History of Flooding (March 1983)



History of Flooding (March 1983)



History of Flooding (February 1998)

