

Guadalupe River: Tasman Drive to Interstate 880 Flood Protection and Level of Service Restoration Project



The Guadalupe River — Tasman Drive to Interstate 880 Project will restore the river to its design flood protection level of service for a 100-year storm. The project area is from Gold Street in Alviso to Interstate 880 near Airport Parkway. Residents and businesses in the cities of Santa Clara and San Jose will benefit from this project.*



History and background

The Guadalupe River has a long history of flooding, with the earliest recorded event occurring in the winter of 1852-1853. Over the years, the portion of Guadalupe River between Interstate 880 and the San Francisco Bay has been the subject of several Valley Water flood protection projects to reduce the risk of flooding for the community. Most recently, the 2004 Lower Guadalupe River Project (LGRP) provided 100-year* flood protection for the river from Interstate 880 to the Union Pacific Railroad bridge in Alviso, where Guadalupe River enters San Francisco Bay through Alviso Slough.

Upstream of the LGRP, the Downtown Guadalupe River Flood Protection Project (DGRP) was constructed in partnership with the U.S. Army Corps of Engineers (USACE). As a condition of the construction of the DGRP, Valley Water committed to USACE to also provide 100-year flood protection downstream. The largest storm since the completion of both projects was in February 2017, with a recorded peak of approximately 6,300 cubic feet per second (cfs)**.

* The definition of a 100-year storm event is an event that has the 1% chance of occurring in any given year (a 1 in 100 chance)

** A cubic foot of water contains nearly 7.5 gallons.



Flood conditions of Guadalupe River at Montague Road in February, 1963.

Valley Water measured high-water marks during recent large storms, which revealed that the Guadalupe River between Gold Street and Interstate 880 no longer has the capacity to provide a 100-year level of flood protection, as was originally designed and constructed. Despite significant and continued maintenance work, vegetation has grown quickly, reducing water flow capacity in the river channel. As a result, Valley Water Board of Directors directed staff to expedite plans to restore the River's level of flood protection back to what it was designed to be: flood protection from a 100-year flood event.



Guadalupe River upstream of Montague Bridge.



View of the east bank downstream of Trimble Road: The flood protection project is on the Guadalupe River between Gold Street in Alviso and Interstate 880 in San Jose.



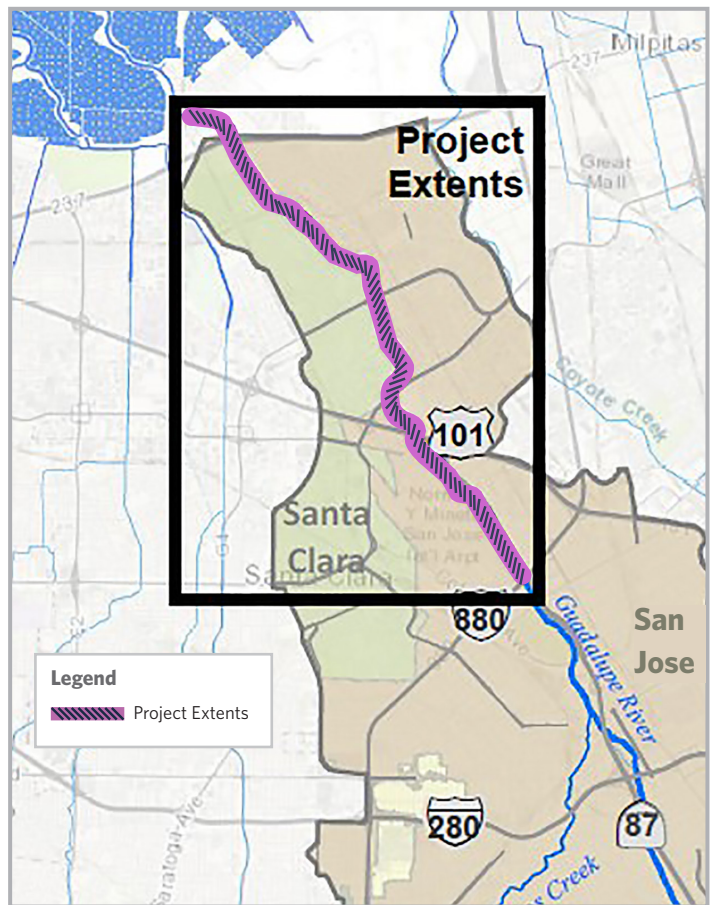
Crews remove overgrown vegetation between Montague Expressway and Tasman Drive.

Project goals and benefits

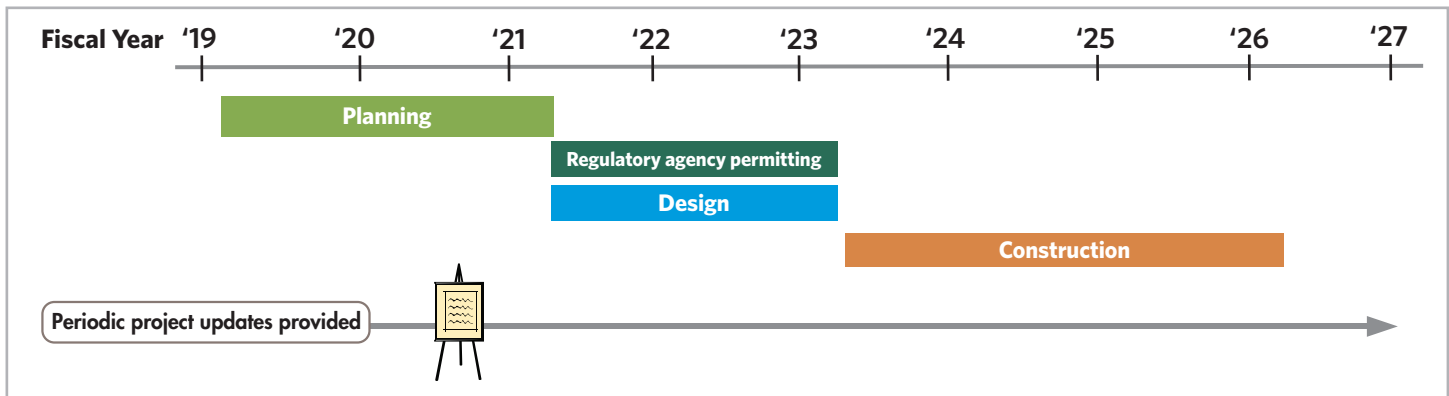
The goal of this project is to reduce the risk of flooding to homes, businesses, schools and highways by restoring the Lower Guadalupe River to its design flood protection level of service. The project benefits the communities of Alviso, San José, and Santa Clara.

Project benefits include:

- Restoring 100-year design level of service, maintaining flood risk mitigation for the communities neighboring the Guadalupe River.
- Maintaining beneficial riparian habitat, critical to native fish, birds and mammals.
- Reducing the need for future maintenance activities.
- Maintaining and improving public recreation and access.



Project phases and projected schedule





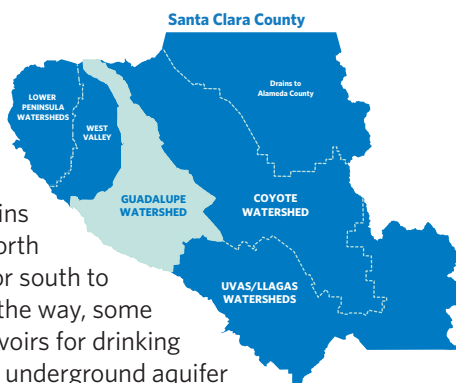
Valley Water maintenance work to remove sediment along the east bank of Guadalupe River, upstream of Tasman Drive.

Funding

This project is funded by Valley Water's General Fund.

You're in a watershed

A watershed is the area of land that drains a common waterway. In Santa Clara County, our creeks catch rain and runoff from storm drains and carry the water north to San Francisco Bay or south to Monterey Bay. Along the way, some of the water fills reservoirs for drinking water, replenishes the underground aquifer and creates better habitat for fish and wildlife. This project is in the Guadalupe Watershed. This 170-square-mile-area drains the Guadalupe River and its tributaries through downtown San Jose. Lexington Reservoir, one of the area's best-known landmarks, is located along the western border of this watershed.



We speak your language

Si habla español y tiene preguntas sobre el contenido de este mensaje por favor de comunicarse con Jose Villarreal al JVillarreal@valleywater.org o (408) 630-2879.

Nếu bạn nói tiếng Việt và có thắc mắc về nội dung của thông báo này, xin vui lòng liên hệ với Hoan Cutler HCutler@valleywater.org hoặc (408) 630-3135.

如果你說中文並對上述訊息有疑問, 請聯繫 Julia Tat, 電郵 jtat@valleywater.org, 或者電話: (408) 630-3168.

CONTACT US

To find out the latest information on Valley Water projects or to submit questions or comments, contact **Katie Muller** at (408) 630-2934 or kmuller@valleywater.org and **Afshin Rouhani** at (408) 630-2616 or arouhani@valleywater.org or use our **Access Valley Water** customer request system at <https://delivr.com/2x9ff>.



FOLLOW US



scvwd



valleywater



valleywater



Join our mailing list:
<https://delivr.com/2uz9z>

